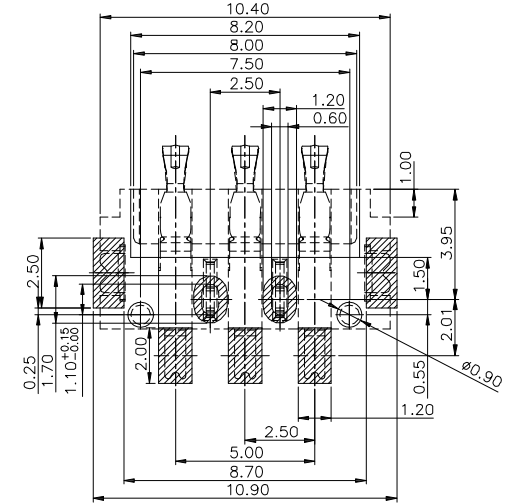
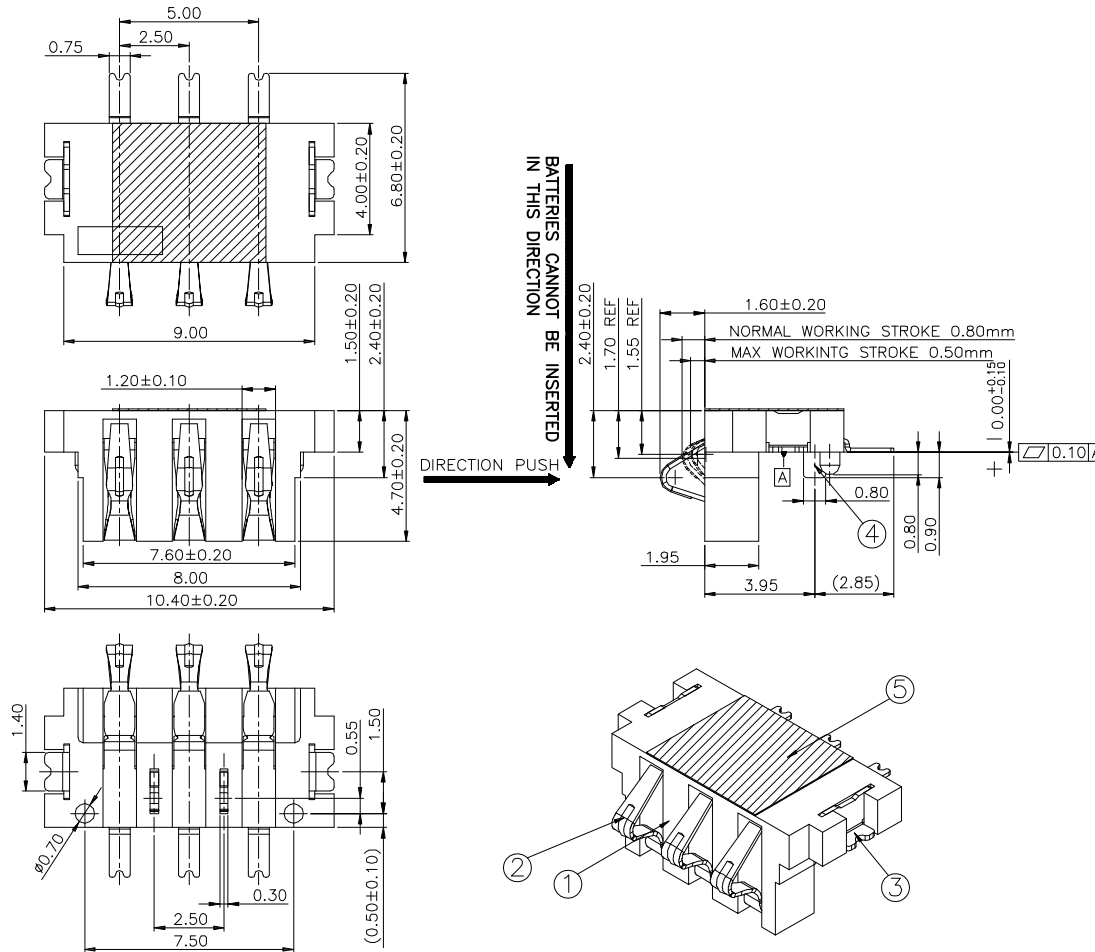


1 2 3 4 5 6 7 8 9 10

RECOMMENDED P.C.B LAYOUT (COMPONENT SIDE)
LAYOUT TOLERANCE = ±0.05mm

A
B
C
D
E
F


A
B
C
D
E
F



NOTE:
1. PUSH FORCE
50g OR MORE PER PIN
STROKE = 0.80mm

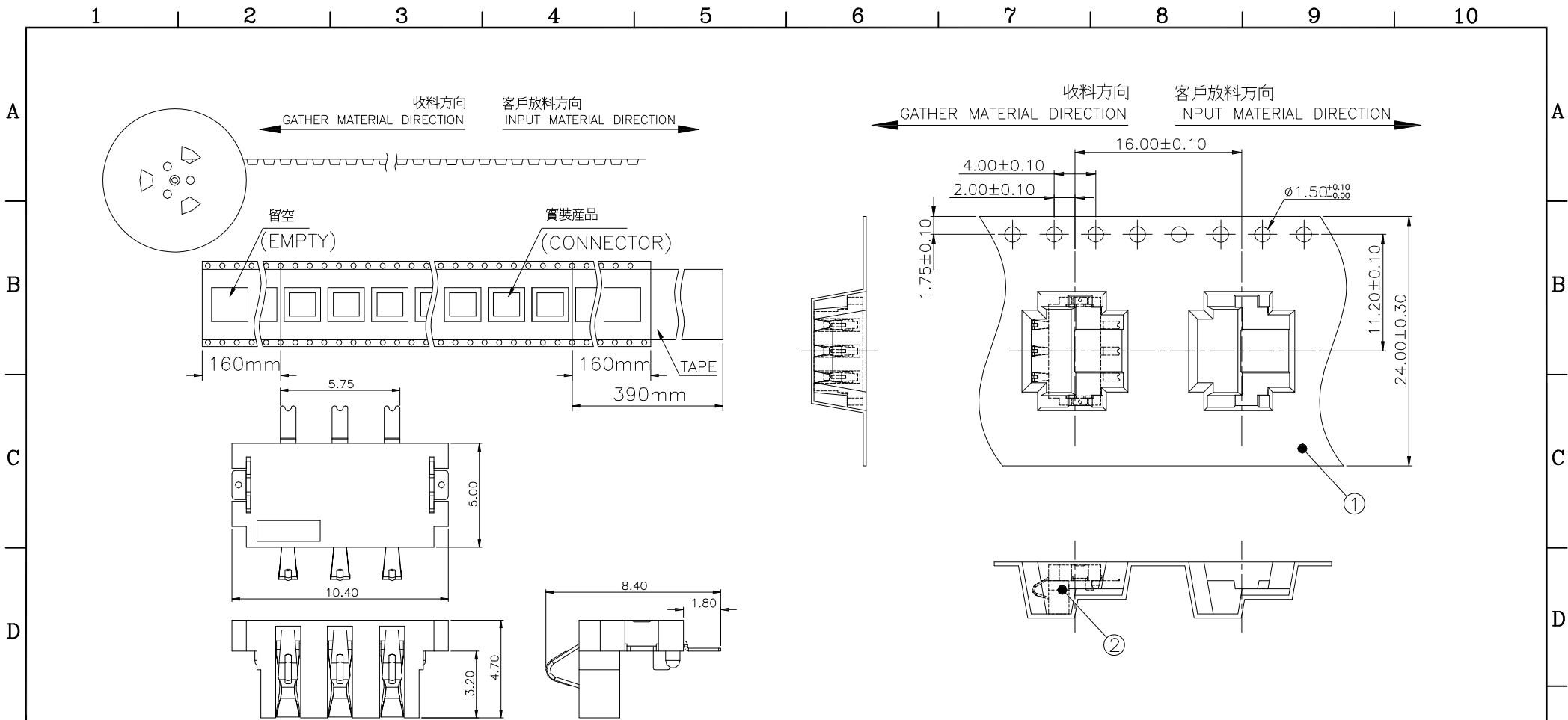
NO.	DESCRIPTION	MATERIAL	COLOR	REMARK
5	CAPTON	HIGH TEMP. PLASTIC	YELLOW	——
4	LATCH	METAL	——	TIN PLATED
3	LATCH	METAL	——	TIN PLATED
2	TERMINAL	COPPER ALLOY	——	GOLD PLATED
1	HOUSING	HIGH TEMP. PLASTIC	BLACK	UL94V-0

PROPRIETARY NOTE:
This document contains confidential information and proprietary to Rego Electronics and shall not be reproduced or disclosed to other documents or used for any purpose other than that for which was obtained without the expressed written consent of Rego Electronics.

.X ± 0.30	APPROVED: Chris	 http://www.rego.com.tw
.XX ± 0.20	CHECKED: Andy	
.XXX ± 0.15	DRAWN: Vic	
X* ± 3'		
UNITS: mm	SCALE: NONE	TITLE: 2.50mm SPRING BATTERY CONN
		PART NO: RG250083-MB003G102ZL
		SHEET: 1 OF 2

A	10.1.2015
REV	DATE

1 2 3 4 5 6 7 8 9 10



SECTION 4:1

[1] PACKAGE INFORMATION

PART NUMBER	Q'TY PER REEL
RG250083-MB003G102ZL	800 PCS


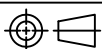
[2] NOTES: 1. ALL DIMENSIONS TOLERANCE ARE: ±0.25mm UNLESS OTHERWISE SPECIFIED.
2. COMPONENT LOAD BY 13" REEL.

A	10.1.2015
REV	DATE

3				
2	PRODUCT			RG250083-MB003G102ZL
1	REEL	PS	BLACK	IPR0735-003-02
	NO. DESCRIPTION	MATERIAL	COLOR	REMARK

PROPRIETARY NOTE:

This document contains confidential information and proprietary to Rego Electronics and shall not be reproduced or disclosed to other documents or used for any purpose other than that for which was obtained without the expressed written consent of Rego Electronics.

.X ± 0.30	APPROVED: Chris	 http://www.rego.com.tw
.XX ± 0.20	CHECKED: Andy	
.XXX ± 0.15	DRAWN: Vic	
X* ± 3°		
	UNITS: mm	SCALE: NONE
PART NO: RG250083-MB003G102ZL		SHEET: 2 OF 2