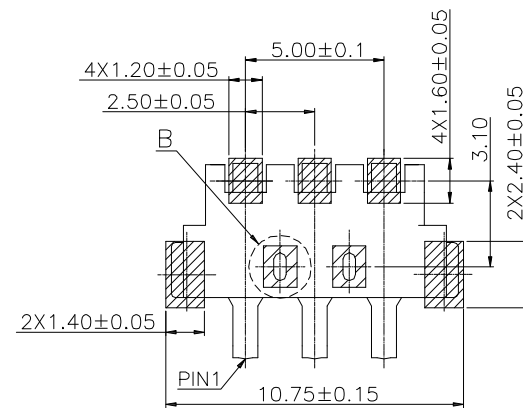
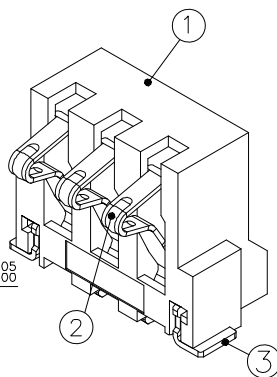
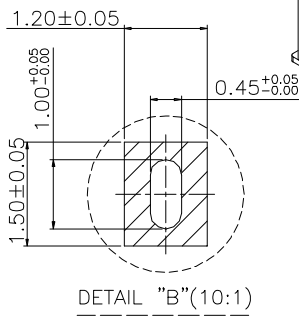
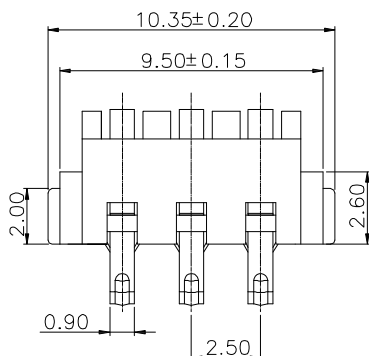


1 2 3 4 5 6 7 8 9 10

RECOMMENDED P.C.B. LAYOUT (COMPONENT SIDE)  
P.C.B THICKNESS=0.80mm (TOLERANCE=±0.05)

NOTE(1):

1.PUSH FORCE 51g MIN. ~140g MAX.PER PIN.



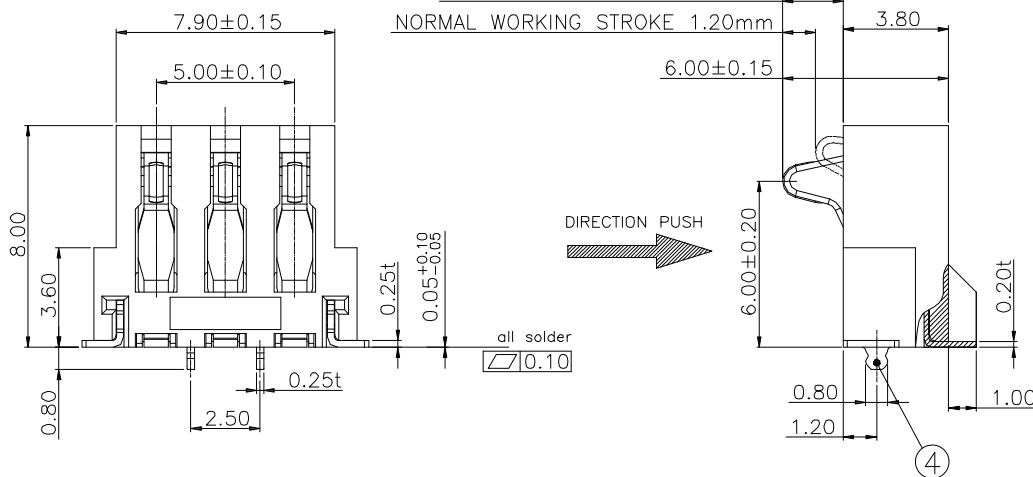
NOTE(2):

RG250042-MB003G311ZR

- 1.SELECTIVE PLATING
  - G1-05u" GOLD OVER NICKEL.
  - G2-GOLD FLASH OVER 30u"MIN.NICKEL.
  - G3-10u" GOLD OVER NICKEL.
  - G4-15u" GOLD OVER NICKEL.
  - G5-30u" GOLD OVER NICKEL.
  - G6-50u" GOLD OVER NICKEL.
- 2.PRODUCT INFORMATION

P/NO.	INFORMATION	PRODUCT SPEC.
RG250042-MB003GX11ZR	REEL WITH CAP	RG250042-MB
RG250042-MB003GX11ZL	REEL WITHOUT CAP	RG250042-MB
RG250042-MB003GX31ZR	REEL WITH CAP	RG250042-MB003XX31XX
RG250042-MB003GX31ZL	REEL WITHOUT CAP	RG250042-MB003XX31XX


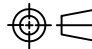
MAX.WORKING STROKE 2.20mm  
NORMAL WORKING STROKE 1.20mm



NO.	DESCRIPTION	MATERIAL	COLOR	REMARK
4	FORK	C2680H	—	TIN PLATED
3	LATCH	C2680H	—	TIN PLATED
2	TERMINAL	C5210H	—	SELECTIVE GOLD
1	PLASTIC	LCP	BLACK	UL 94V-0

PROPRIETARY NOTE:

This document contains confidential information and proprietary to Rego Electronics and shall not be reproduced or disclosed to other documents or used for any purpose other than that for which was obtained without the expressed written consent of Rego Electronics.

.X ± 0.30	APPROVED:	 <a href="http://www.rego.com.tw">http://www.rego.com.tw</a>
.XX ± 0.20	Chris	
.XXX ± 0.15	CHECKED:	
X* ± 3"	Andy	
	DRAWN:	TITLE: 2.50 PITCH SPRING BATTERY CONNECTOR
	Vic	
	UNITS:	SCALE:
	mm	
PART NO: RG250042-MB003G311ZR		SHEET: 1 OF 1

G	18.8.2015
REV	DATE

1 2 3 4 5 6 7 8 9 10