

Material and Plating:

Housing: LCP, UL94V-0, Black.
 Signal Contacts : Phosphor Bronze.
 Gold Plated on Contact Area and 80u" Min Tin Plated on Solder Tail over nickel 50u" Min .
 Ground Contacts : Phosphor Bronze.
 Gold Plated on Contact Area and 80u" Min Tin Plated on Solder Tail over nickel 50u" Min .

Electrical Characteristics:

Current Rating: Signal: 3A Per Contact With 3 Adjacent Contacts (UL).
 Ground: 25A Per Contact With 1 Contact.

Voltage Rating: 125V AC .
 Dielectric Withstanding Voltage: 525V AC For 1 minute.
 Insulator Resistance: 5000MΩ min at DC 500V.
 Contact Resistance: Signal: 45mΩ max .
 Ground: 15mΩ max .

Operating Temperature: -55°C ~ +125°C .

Durability: 250 Cycle .

***RoHS Compliant**

TABLE 2			
"*" Available Position			
Code	Pos.	Dimension	
		A	B
1			
*	60	21.31	20.13
*	120	41.31	40.13
*	180	61.38	60.13

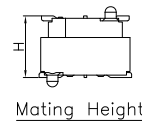
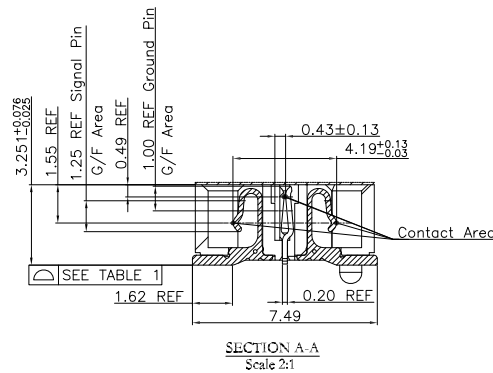



TABLE 1	
NO OF POSITIONS	COPLANARITY (INCLUDING GP)
-60 THRU -120	0.10
-180	0.15
Signaling (5mm Stack Height)	Speed Rating (No PCB Effect)
Single-Ended	9.5GHz/19Gbps
Differential	10.5GHz/21Gbps

803HC84A- XX F C x D P 1 N x x x x
 Series: S: Mylar, Blank Without Pad
 Position: U: Tube Package, T: Tape & Reel Package, A: Tray Package
 F: Female
 C: Selective Gold Plated
 2: 0.05u" Friction lock
 3: 10u" Blank Without Guides
 G: Guides Pin
 D: SMD Type
 N: W/O Post, L: With Lock (Press Pin), Li: With Lock (Solder)
 P: With Post
 P1: Up & Down Post and P
 Code 1

PROPRIETARY NOTE:
 This document contains confidential information and proprietary to Rego Electronics and shall not be reproduced or disclosed to other documents or used for any purpose other than that for which was obtained without the expressed written consent of Rego Electronics.

.X ± 0.30	APPROVED: Chris	 http://www.rego.com.tw
.XX ± 0.20	CHECKED: Andy	
.XXX ± 0.15	DRAWN: Vic	
X* ± 3'	UNITS: mm	SCALE: NONE
PART NO: 803HC84A-xxFCxDP1Nxxxx		TITLE: High Speed Board to Board Pitch 0.5mm Socket
SHEET: 1		OF 6

R2	15.7.2020
REV	DATE

Code: 1~10 (A)	1	2	3	4	5	6	7	8	9	10
Male	4.267	7.267	10.267	15.243	18.240	21.237	24.237	29.238	32.269	34.270
Code: 1	1	1	1	1	1	1	1	1	1	1
Female	3.25	3.25	3.25	3.25	3.25	3.25	3.25	3.25	3.25	3.25
Mating Height(H)	5.00	8.00	11.00	16.00	19.00	22.00	25.00	30.00	14.00	15.00

1 2 3 4 5 6 7 8 9 10

A

A

B

B

C

C

D

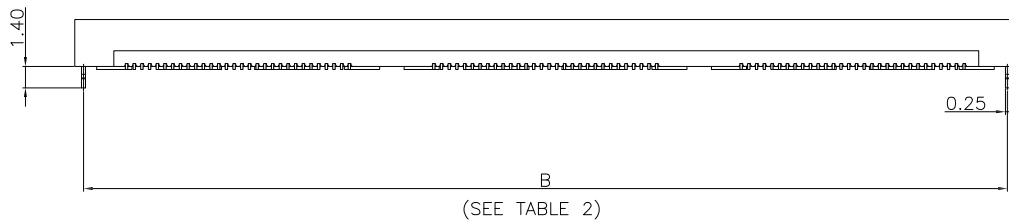
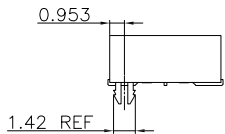
D

E

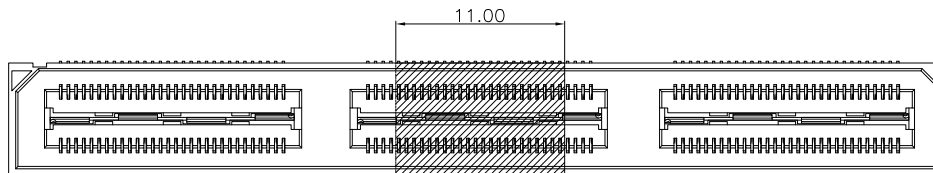
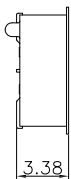
E

F

F




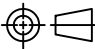
-L(With Lock)SAME AS SHEET 1 , EXCEPT AS SHOWN



-S:Mylar

R2	15.7.2020
REV	DATE

1 2 3 4 5 6 7 8 9 10

PROPRIETARY NOTE: This document contains confidential information and proprietary to Rego Electronics and shall not be reproduced or disclosed to other documents or used for any purpose other than that for which was obtained without the expressed written consent of Rego Electronics.		
.X ± 0.30	APPROVED: Chris	 http://www.rego.com.tw TITLE: High Speed Board to Board Pitch 0.5mm Socket
.XX ± 0.20	CHECKED: Andy	
.XXX ± 0.15	DRAWN: Vic	
X* ± 3°		
	UNITS: mm	SCALE: NONE
		PART NO: 803HC84A-xxFCxDP1Nxxxx
		SHEET: 2 OF 6

1 2 3 4 5 6 7 8 9 10

A

B

C

D

E

F

A

B

C

D

E

F

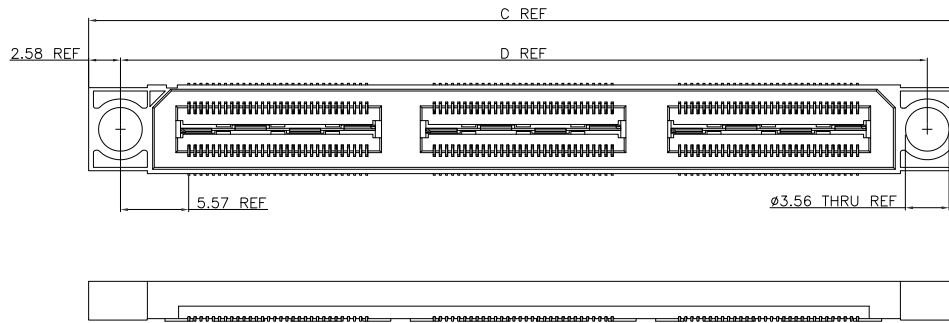
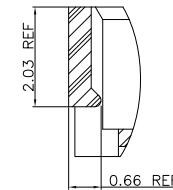
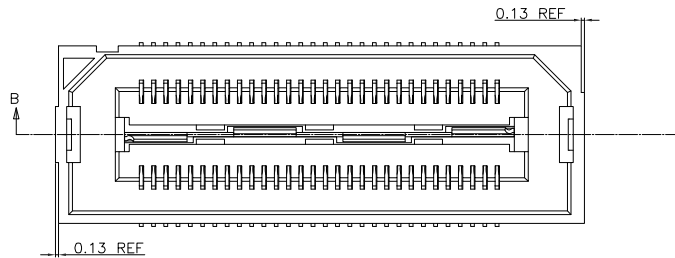


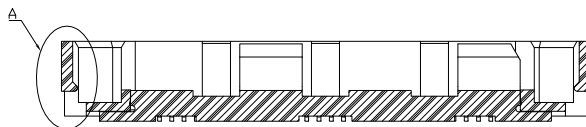
TABLE 3		
Pos.	Dimension	
	C	D
60	30.89	25.73
120	50.89	45.73
180	70.89	65.74

-G(Guides Pin) SAME AS SHEET 1, EXCEPT AS SHOWN



DETAIL A
SCALE 8:1


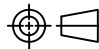
-F(Friction Lock)
SAME AS SHEET 1, EXCEPT AS SHOWN
Not Available with -G(Guides Pin) Options



SECTION B-B
SCALE 4:1

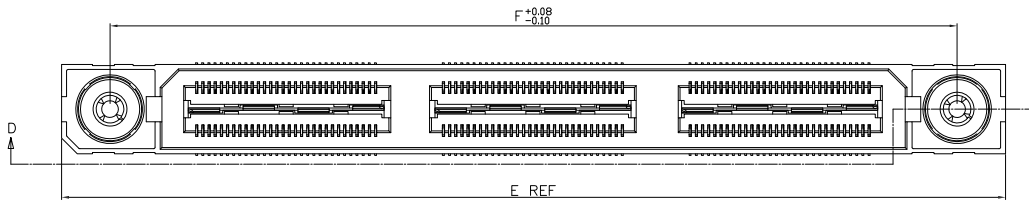
R2	15.7.2020
REV	DATE

1 2 3 4 5 6 7 8 9 10

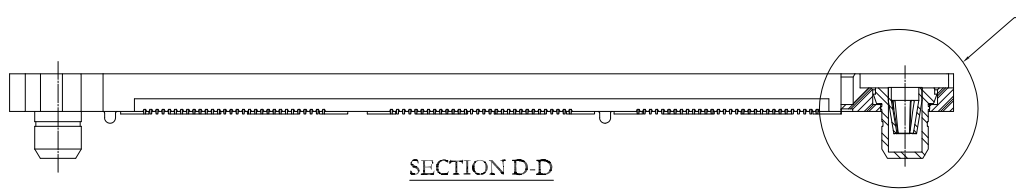
PROPRIETARY NOTE: This document contains confidential information and proprietary to Rego Electronics and shall not be reproduced or disclosed to other documents or used for any purpose other than that for which was obtained without the expressed written consent of Rego Electronics.		
.X ± 0.30	APPROVED: Chris	 http://www.rego.com.tw
.XX ± 0.20	CHECKED: Andy	
.XXX ± 0.15	DRAWN: Vic	TITLE: High Speed Board to Board Pitch 0.5mm Socket
X* ± 3°	UNITS: mm	PART NO: 803HC84A-xxFCxDP1Nxxxx
	SCALE: NONE	SHEET: 3 OF 6

1 2 3 4 5 6 7 8 9 10

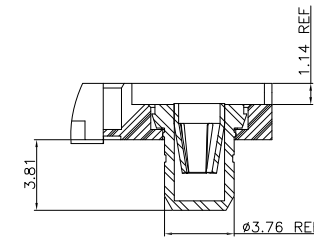
A



B



SECTION D-D



DETAIL E
SCALE 3:1

TABLE 4		
POS	E	F
60	36.51	28.66
120	56.52	48.67
180	76.52	68.67

-P1 (Up & Down Post and P) SAME AS SHEET 1, EXCEPT AS SHOWN
(FOR -P STYLE ONLY)
(Not Available with -L,-G, or -F Options)

C

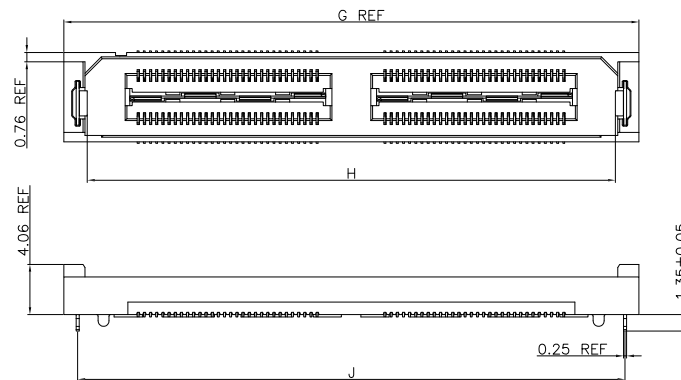
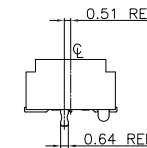


TABLE 5			
POS	G	H	J
60	26.61	22.78	24.36
120	46.61	42.78	44.36
180	66.61	62.78	64.36



-L1 (With Lock) SAME AS SHEET 1, EXCEPT AS SHOWN
(Not Available with -L,-G,-F, or -P1 Options)
(Not Available With -180 POS)

D


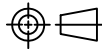
E

F

R2	15.7.2020
REV	DATE

1 2 3 4 5 6 7 8 9 10

PROPRIETARY NOTE:
This document contains confidential information and proprietary to Rego Electronics and shall not be reproduced or disclosed to other documents or used for any purpose other than that for which was obtained without the expressed written consent of Rego Electronics.

.X ± 0.30	APPROVED: Chris	 http://www.rego.com.tw
.XX ± 0.20	CHECKED: Andy	
.XXX ± 0.15	DRAWN: Vic	
X* ± 3°		
	UNITS: mm	SCALE: NONE
		PART NO: 803HC84A-xxFCxDP1Nxxxx
		SHEET: 4 OF 6

A

B

C

D

E

F

1 2 3 4 5 6 7 8 9 10

A

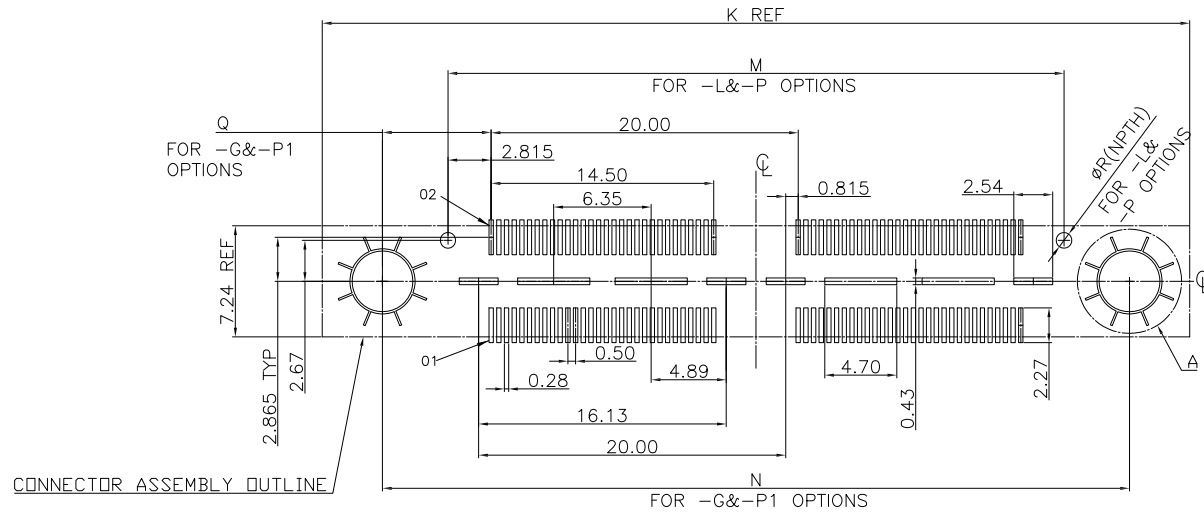
B

C

D

E

F

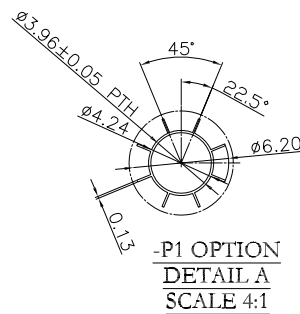
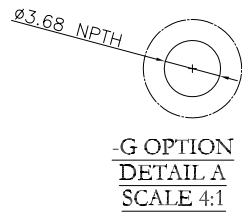


P.C.Board Layout
(Tolerance: ±0.05)


OPTION	Q
-G	5.61
-P1	7.08

OPTION	R
-L	1.19
-P	1.02

POS	K					
	-L&P	-F	-G	-P1	M	N
60	21.31	20.38	30.89	36.53	20.13	28.68
120	41.31	40.39	50.89	56.53	40.13	48.68
180	61.38	60.39	70.89	76.53	60.13	68.68

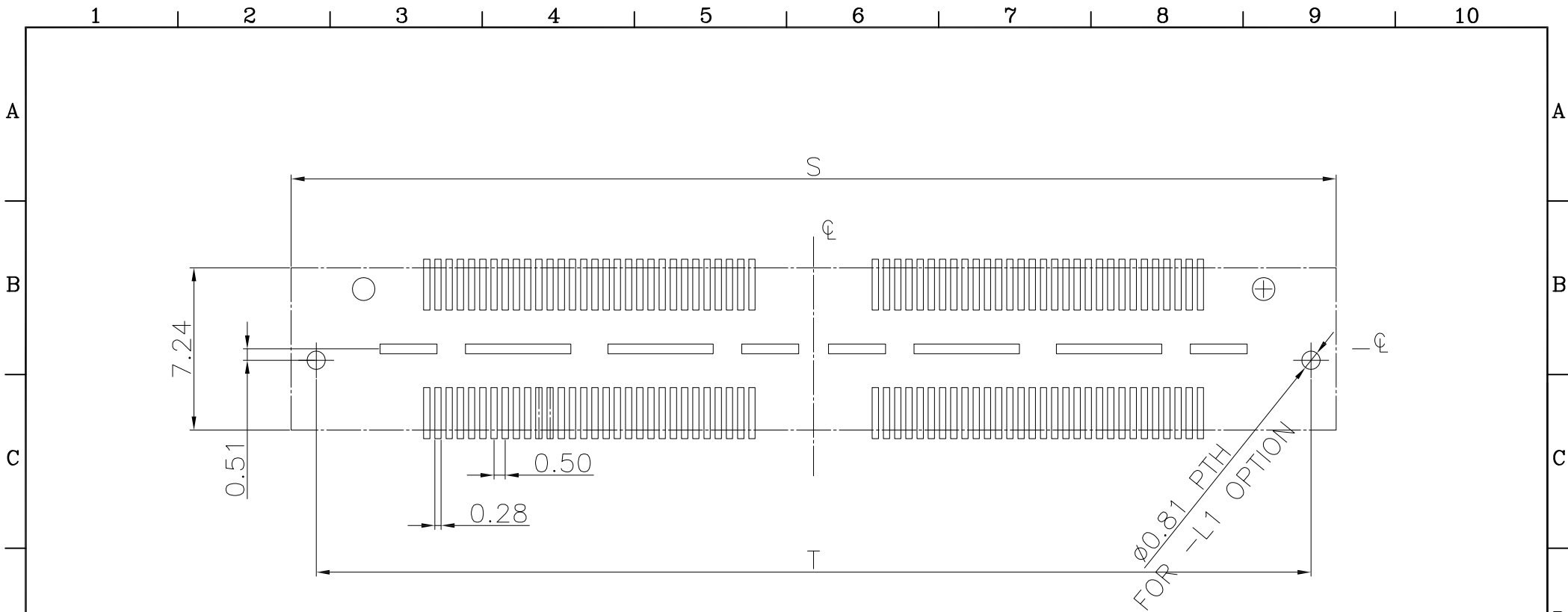


PROPRIETARY NOTE:
This document contains confidential information and proprietary to Rego Electronics and shall not be reproduced or disclosed to other documents or used for any purpose other than that for which was obtained without the expressed written consent of Rego Electronics.

.X ± 0.30	APPROVED: Chris	 http://www.rego.com.tw TITLE: High Speed Board to Board Pitch 0.5mm Socket
.XX ± 0.20	CHECKED: Andy	
.XXX ± 0.15	DRAWN: Vic	
X* ± 3'		
UNITS: mm	SCALE: NONE	PART NO: 803HC84A-xxFCxDP1Nxxxx
		SHEET: 5 of 6

R2	15.7.2020
REV	DATE

1 2 3 4 5 6 7 8 9 10


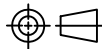


P.C.Board Layout
(Tolerance: ± 0.05)

TABLE 9		
POS	S	T
60	26.62	24.36
120	46.62	44.36
180	66.62	64.36

R2	15.7.2020
REV	DATE

PROPRIETARY NOTE:
This document contains confidential information and proprietary to Rego Electronics and shall not be reproduced or disclosed to other documents or used for any purpose other than that for which was obtained without the expressed written consent of Rego Electronics.

.X ± 0.30	APPROVED: Chris	 http://www.rego.com.tw TITLE: High Speed Board to Board Pitch 0.5mm Socket
.XX ± 0.20	CHECKED: Andy	
.XXX ± 0.15	DRAWN: Vic	
X* $\pm 3^*$		
	UNITS: mm	SCALE: NONE
PART NO: 803HC84A-xxFCxDP1Nxxxx		SHEET: 6 OF 6