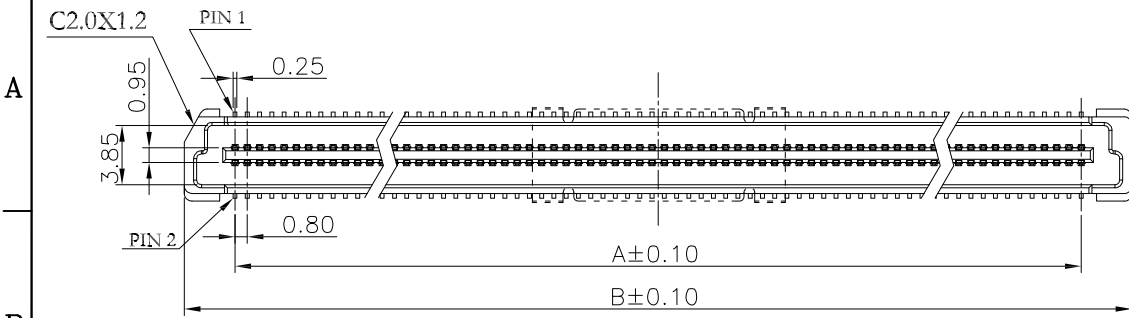
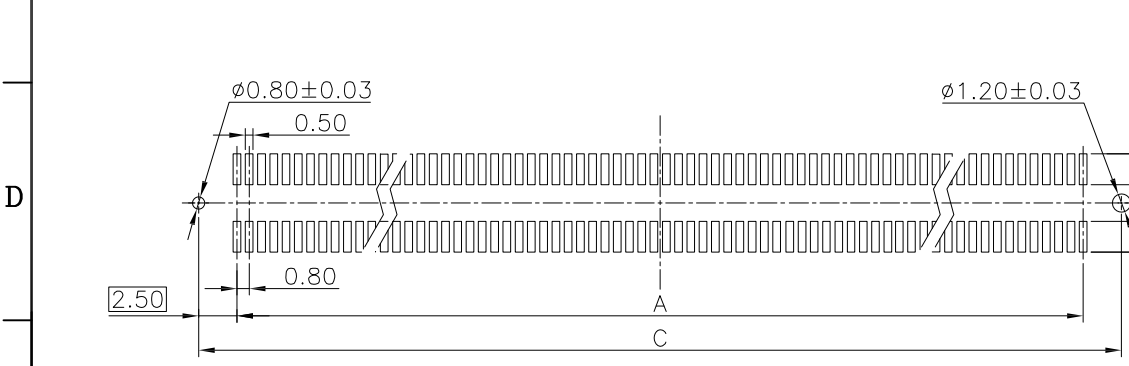
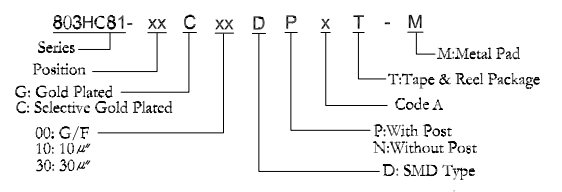
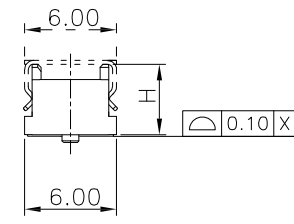
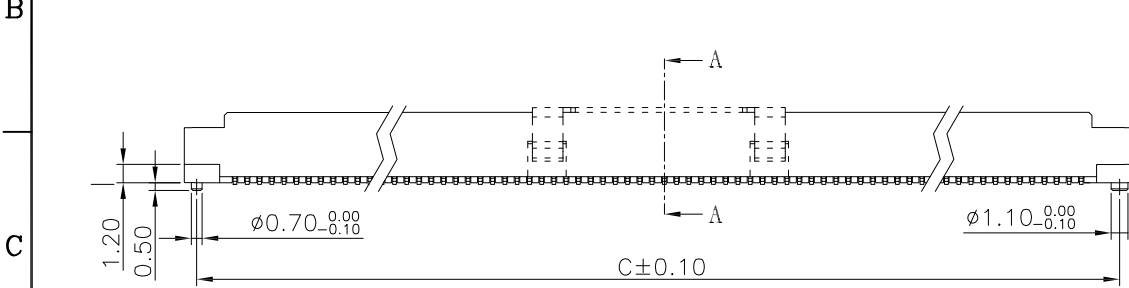


1 2 3 4 5 6 7 8 9 10



Material and Plating:  
**Housing:** LCP, 50% Glass Filled, UL94V-0, Natural Color.  
**Signal Contacts:** Brass.  
 Gold Flash on Contact Area and 80~160u" Tin Plated on Solder Tail over Nickel 50~120u" under plated.  
**Electrical Characteristics:**  
**Current Rating:** 0.5 AMP.  
**Dielectric Withstanding Voltage:** AC 500V For 1 minute.  
**Insulator Resistance:** 500MΩ min. at DC 250V.  
**Contact Resistance:** 30mΩ max. at DC 100mA.  
**Operating Temperature:** -45°C~+125°C.  
 \*RoHS Compliant

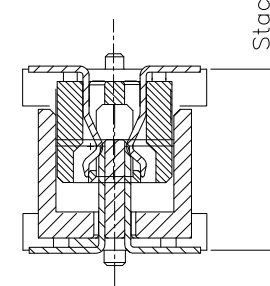
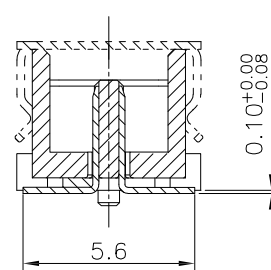
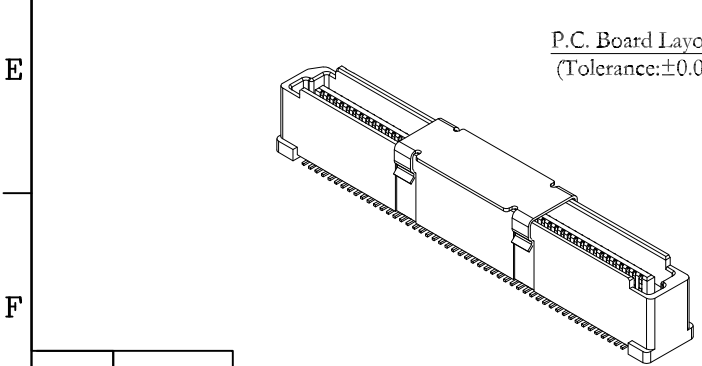


"\*" Available Position

Code				Pos.	Dimension		
H1	H2	H3	H4		A	B	C
*				60	23.20	29.80	28.20
	*			80	31.20	37.80	36.20
		*		100	39.20	45.80	44.20
*				140	55.20	61.80	60.20

Code(A)	1	2	3	4
Height(H)	4.60	5.60	6.60	7.60

803HC81	(A) Code				(B) Code			
	1	2	3	4	1	2	3	4
Height (mm)	4.6	5.6	6.6	7.6	4.6	5.6	6.6	7.6
803HC82	1				2			
	3.7				7.7			
Stacked Height(Y) mm	5.0	6.0	7.0	8.0	9.0	10.0	11.0	12.0



**PROPRIETARY NOTE:**  
 This document contains confidential information and proprietary to Rego Electronics and shall not be reproduced or disclosed to other documents or used for any purpose other than that for which was obtained without the expressed written consent of Rego Electronics.

.X ± 0.30	APPROVED: Chris	 <a href="http://www.rego.com.tw">http://www.rego.com.tw</a>
.XX ± 0.20	CHECKED: Denny	
.XXX ± 0.15	DRAWN: Bryan	
X* ± 3'		
UNITS: mm	SCALE: NONE	TITLE: High Speed Board to Board 0.8mm Male Type Connector
		PART NO: 803HC81-xxCxxDPxT-M
		SHEET: 1 OF 1

A	24.7.2017
REV	DATE

1 2 3 4 5 6 7 8 9 10