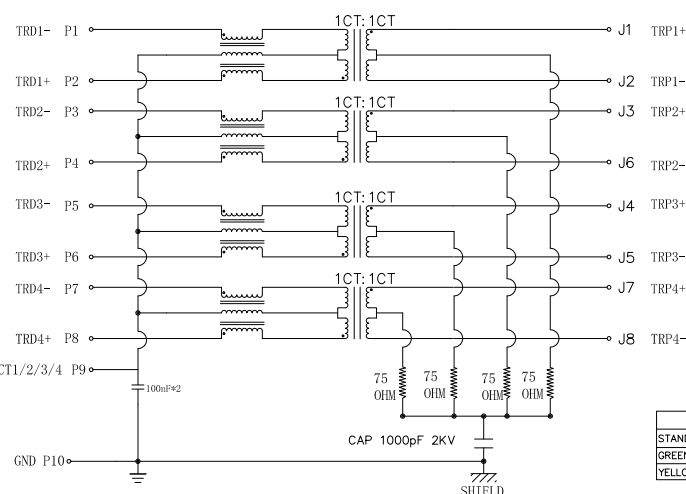
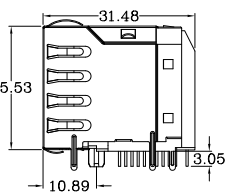
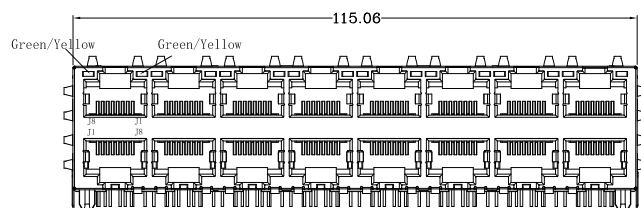
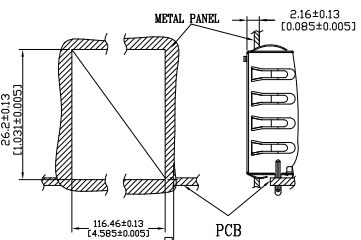
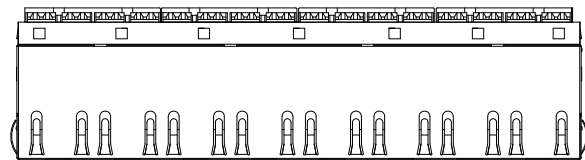


Unless otherwise specified, all dimensions tolerances is $\pm 0.254 / 0.010$.

Notes:

- CONNECTOR MATERIAL:
HOUSING: THERMOPLASTIC BLACK UL94 V-0
SHIELD: Brass
SHIELD PLATING: NICKEL
CONTACT: PHOSPHOR BRONZE
CONTACT PLATING: GOLD, 6 MICRO-INCHS MIN IN CONTACT AREA
- PIN NOT ELECTRICALLY CONNECTED MAYBE OMITTED SEE ELECTRICAL DRAWING FOR OMITTED PINS
- RJ45 CAVITIES CONFORM TO FCC RULES AND REGULATION PART 68.
- THE PART IS RECOMMENDED FOR WAVE SOLDERING PROCESS PEAK SOLDERING TEMPERATURE IS 260° C MAX, 10 SECS MAX
- OPERATING TEMPERATURE T=0° C TO +70° C.
- STORAGE TEMPERATURE T=-40° C TO +85° C.

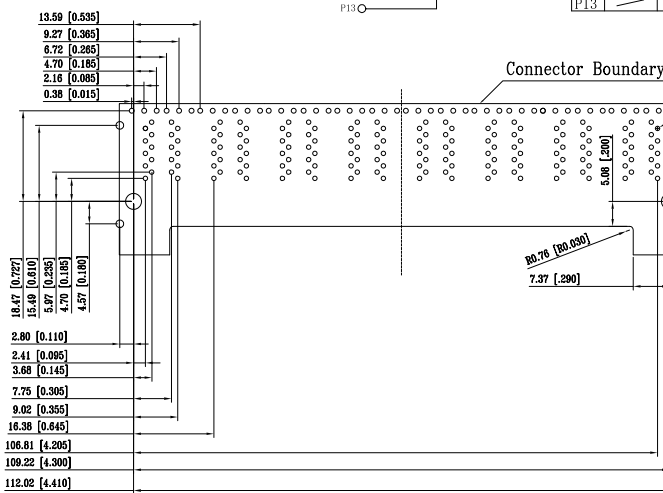
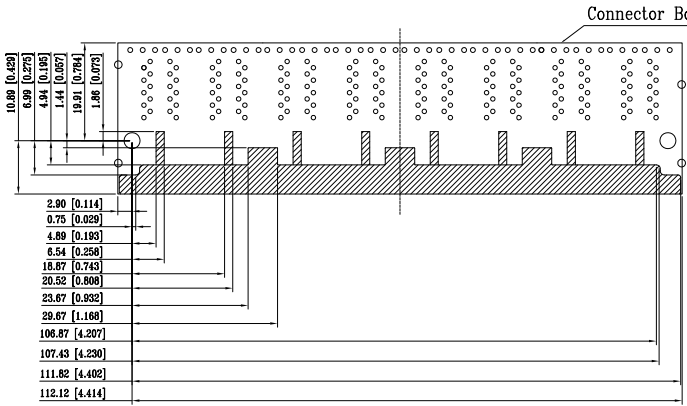


LED SPECIFICATION				
STANDARDLED	WAVELENGTH	Forward Current	Forward V(max)	TYP
GREEN	565nm	20 mA	2.4V	2.2V
YELLOW	590nm	20 mA	2.5V	2.1V


Pin	Green	Yellow
P11	-	-
P12	+	+
P13	-	-

Electronical Specifications:

PARAMETER	SPECIFICATIONS	
URNS RATIO	1.00 ± 2%	
POLARITY	PER SCHEMATIC	
INSERTION LOSS	1 MHz TO 125 MHz	
	-1.0 dB MAX	
RETURN LOSS LOAD 100 OHMS	1-40 MHz	40-200 MHz
	-20 dB MIN	-20±15LOG ₁₀ (F/40MHz) MIN
INDUCTANCE (OCL) (MEDIA SIDE, 0°C-70°C)	180uH MIN @100KHz, 0.1V	
COMMON MODE REJECTION RATIO	30-200 MHz	
	-30 dB MIN	
INPUT - OUTPUT ISOLATION	1500 VRMS MIN AT 60 SECONDS	



PROPRIETARY NOTE:
This document contains confidential information and proprietary to Rego Electronics and shall not be reproduced or disclosed to other documents or used for any purpose other than that for which was obtained without the expressed written consent of Rego Electronics.

.X ± 0.30	APPROVED: Chris	 http://www.rego.com.tw
.XX ± 0.20	CHECKED: Denny	
.XXX ± 0.15	DRAWN: Bryan	
X* ± 3'		TITLE: RJ45 With Transformer(2.5G BASE T) 2X8 Port Connector
UNITS: mm	SCALE: NONE	PART NO: KJ252816-40139-GDJ
		SHEET: 1 OF 1

A	16.7.2018
REV	DATE

UNIT: mm / inch
Tolerances: $\pm 0.10 / 0.004$

Plug-in side

Plug-in side