

Unless otherwise specified, all dimensions tolerances is $\pm 0.254 / 0.010$.

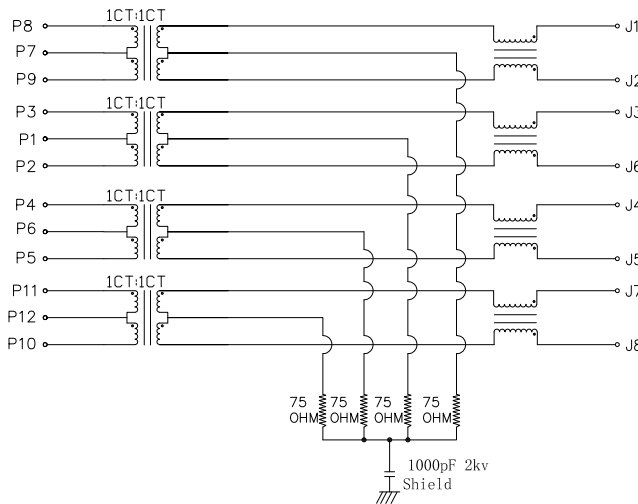
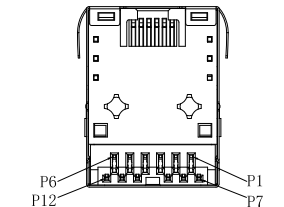
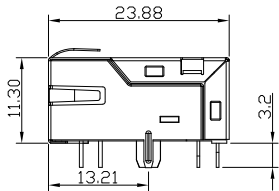
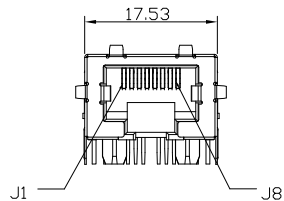
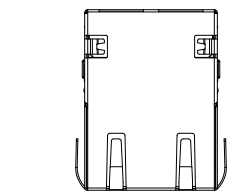
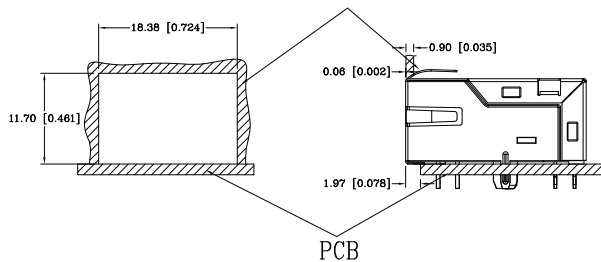
Notes:

- CONNECTOR MATERIAL:
 HOUSING: THERMOPLASTIC BLACK UL94 V-0
 SHIELD: Brass
 SHIELD PLATING: NICKEL
 CONTACT: PHOSPHOR BRONZE
 CONTACT PLATING: SELECTIVE GOLD, 30 MICRO-INCHS MIN IN CONTACT AREA
- PIN NOT ELECTRICALLY CONNECTED MAYBE OMITTED SEE ELECTRICAL DRAWING FOR OMITTED PINS
- RJ45 CAVITIES CONFORM TO FCC RULES AND REGULATION PART 68.
- THE PART IS RECOMMENDED FOR WAVE SOLDERING PROCESS PEAK SOLDERING TEMPERATURE IS 260° C MAX, 10 SECS MAX
- OPERATING TEMPERATURE T=0° C TO +70° C.
- STORAGE TEMPERATURE T=-40° C TO +85° C.

A
B
C
D
E
F

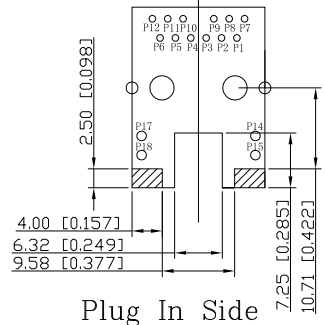
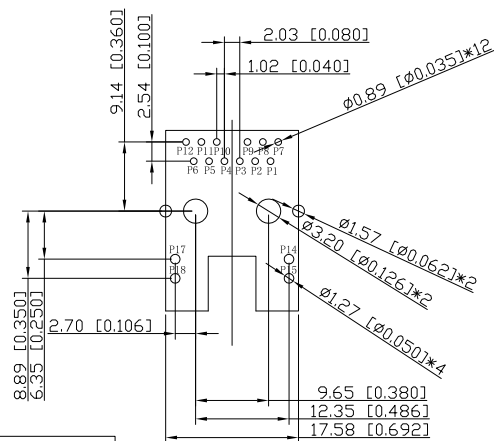
A
B
C
D
E
F

METAL PANEL



ELECTRICAL SPECIFICATIONS @ 25°C:


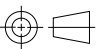
PARAMETER	SPECIFICATIONS	
URNS RATIO	1.00 ± 2%	
POLARITY	PER SCHEMATIC	
INSERTION LOSS	1 MHZ TO 125 MHZ	
	-1.0 dB MAX	
RETURN LOSS LOAD 100 OHMS	1-40 MHZ	40-200 MHZ
	-20 dB MIN	-20+15LOG ₁₀ (F/40MHZ) MIN
INDUCTANCE (OCL) (MEDIA SIDE, 0°C-70°C)	180uH MIN @100KHz,0.1V	
CROSSTALK, ADJACENT CHANNELS	1-125 MHZ	
	-30 dB TYP	
COMMON MODE REJECTION RATIO	30-200 MHZ	
	-30 dB MIN	
INPUT - OUTPUT ISOLATION	1500 VRMS MIN AT 60 SECONDS	



UNIT: mm / inch
Tolerances: $\pm 0.10 / 0.004$

PROPRIETARY NOTE:

This document contains confidential information and proprietary to Rego Electronics and shall not be reproduced or disclosed to other documents or used for any purpose other than that for which was obtained without the expressed written consent of Rego Electronics.

.X ± 0.30	APPROVED: Chris	 http://www.rego.com.tw
.XX ± 0.20	CHECKED: Denny	
.XXX ± 0.15	DRAWN: Bryan	TITLE: RJ45 With Transformer(2.5G BASE T) Tab Down & Low Profile Single Port
X° ± 3°		PART NO: KJ2517D-023
	UNITS: mm	SCALE: NONE
		SHEET: 1 OF 1

A	12.9.2017
REV	DATE

Plug In Side

Plug In Side