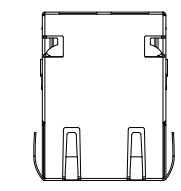
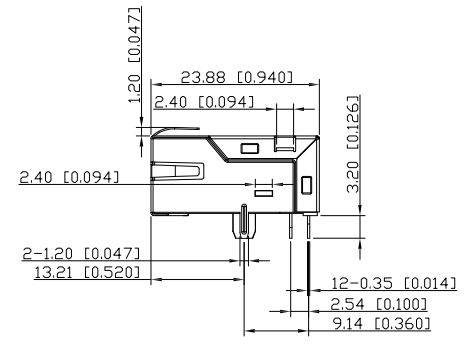
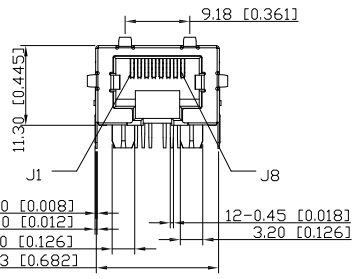


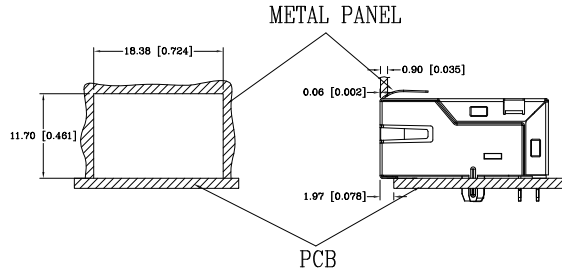
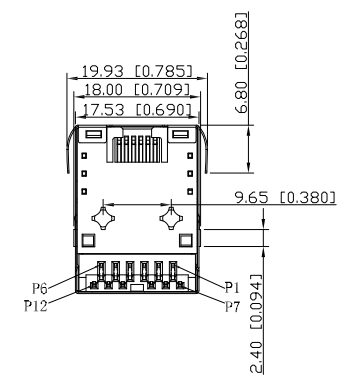
A



Plug In Side

B

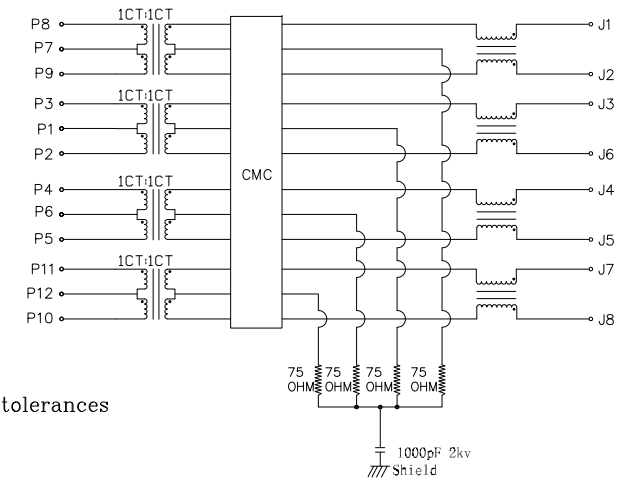
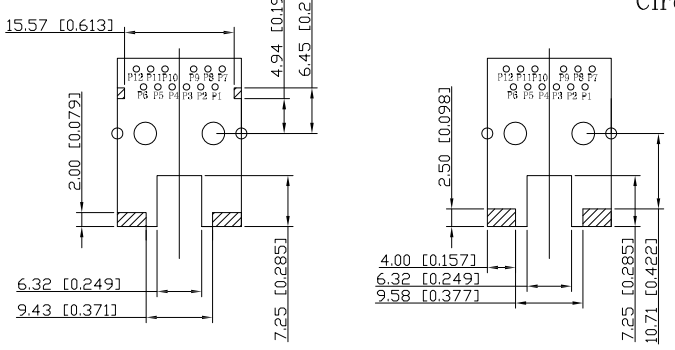
C



Circuit Schematic and Electrical Specifications:
Circuit Schematic:

D

E



Notes:

- CONNECTOR MATERIAL:
HOUSING: THERMOPLASTIC BLACK UL94 V-0
SHIELD: Brass
SHIELD PLATING: NICKEL
CONTACT: PHOSPHOR BRONZE
CONTACT PLATING: SELECTIVE GOLD, 30 MICRO-INCHES MIN IN CONTACT AREA
- PIN NOT ELECTRICALLY CONNECTED MAYBE OMITTED SEE ELECTRICAL DRAWING FOR OMITTED PINS
- RJ45 CAVITIES CONFORM TO FCC RULES AND REGULATION PART 68.
- THE PART IS RECOMMENDED FOR WAVE SOLDERING PROCESS PEAK SOLDERING TEMPERATURE IS 260° C MAX, 10 SECS MAX
- OPERATING TEMPERATURE T=0° C TO +70° C.
- STORAGE TEMPERATURE T=-40° C TO +85° C.


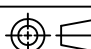
ELECTRICAL SPECIFICATIONS @ 25°C:

- HI-POT: 2250VDC
- L.C.R @ 25°C
 - PRIMARY INDUCTANCE (OCL)
160uH Min.@100KHz/100mVRMS,0mA DC BIAS
 - TURNS RATIO
PRIMARY:SECONDARY 1CT:1CT ±2%
 - DCR: < 2 ohm
- HIGH FREQUENCY
 - RL (RETURN LOSS) LINE SIDE(S11):
1-40 MHz, < -18dB
40-400 MHz, < -18dB+10*Log(Freq/40MHz)dB
400-500 MHz, < -8+30*Log(Freq/400MHz)dB
 - RL (RETURN LOSS) PHY SIDE(S22):
1-100 MHz, < -20dB
100-300 MHz, < -23.1+ (0.031*Freq)dB
300-600 MHz, < -17.8+ (0.013333*Freq)dB
600-800 MHz, < -32.3+ (0.0375*Freq)dB
 - IL (INSERTION LOSS) phy-to-Line and Line-to-Phy(S12/S21):
1-5 MHz, > -0.575+ (0.025*Freq) dB
5-200 MHz, > -0.4425+ (0.001645*Freq) dB
200-400 MHz, > -0.1315+ (0.0032*Freq) dB
 - COMMON TO DIFFERENTIAL MODE CONVERSION,Phy-to-Phy(Sdc22):
1-50 MHz, < -30dB
50-150 MHz, < -33.5+ (0.07*Freq) dB
150-380 MHz, < -28.87+ (0.03913*Freq) dB
380-500 MHz, < -14dB
 - COMMON TO DIFFERENTIAL MODE CONVERSION,Line-to-Phy(Sdc21):
1-200 MHz, < -40.05+(0.05025*Freq)dB
200-380 MHz, < -44.438+ (0.0722*Freq) dB
380-500 MHz, < -17dB
 - COMMON MODE ATTENUATION,Phy-to-Line(Scc12):
1-500 MHz, < -22.00401+(Freq/249.5)dB
500-800 MHz, < -36.66667+ (Freq/30) dB
800-1000 MHz, < -10dB
 - RX REFLECTED DIFFERENTIAL TO COMMON MODE CONVERSION,Line-to-Line(Scd11):
1-100 MHz, < -48.1313+(0.1313*Freq)dB
100-400 MHz, < -38.6667+ (0.036667*Freq) dB
400-500 MHz, < -24dB
 - NEAR-END CROSS TALK(NEXT): (S21):
1-350 MHz, < -34.0315+ (Freq/31.72727) dB
350-500 MHz, < -23dB

F

UNIT : mm / inch
Unless otherwise specified,all dimensions tolerances
is ±0.254 / 0.010.

PROPRIETARY NOTE:
This document contains confidential information and proprietary to Rego Electronics and shall not be reproduced or disclosed to other documents or used for any purpose other than that for which was obtained without the expressed written consent of Rego Electronics.

.X ± 0.30	APPROVED: Chris	 http://www.rego.com.tw
.XX ± 0.20	CHECKED: Denny	
.XXX ± 0.15	DRAWN: Bryan	TITLE: RJ45 With Transformer(10G BASE T) Tab Down & Low Profile Single Port)
X° ± 3'	UNITS: mm	SCALE: NONE
	SHEET: 1 OF 1	PART NO: KJ101414-0200-DTDJ

A	11.4.2016
REV	DATE