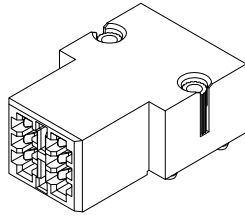
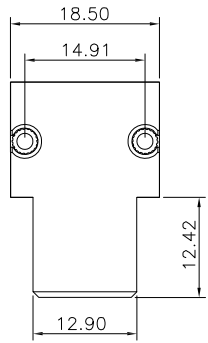


1 2 3 4 5 6 7 8 9 10

A  
B  
C  
D  
E  
F

A  
B  
C  
D  
E  
F



**Material and Plating:**

Housing: LCP, 30% Glass Filled, UL94V-0, BLACK.  
 Power Contacts: High Conductivity Copper, 30u" Au+Pd/Ni on Contact Area and 80u" Min Tin Plated on Solder Tail over nickel 50u" Min.

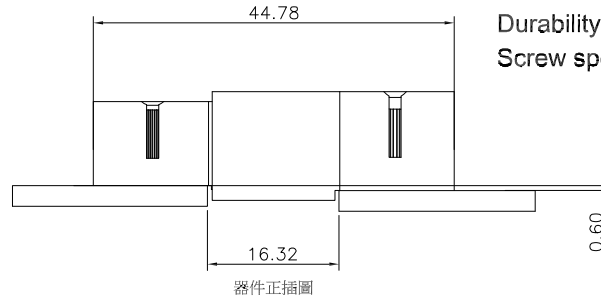
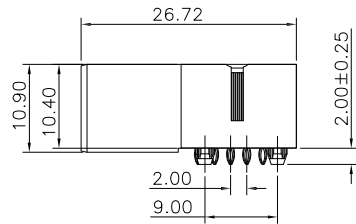
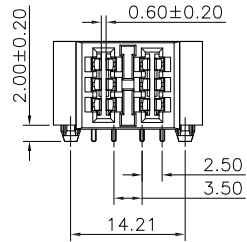
**Electrical Characteristics:**

Current Rating: Power Pin 50 AMP.  
 Dielectric Withstanding Voltage: AC 1500V For 1 minute.  
 Insulator Resistance: 1500MΩ min. at DC 500V.  
 Contact Resistance: Power Pin :4.5mΩ Max initial, After testing 5mΩ Max.  
 Operating Temperature: -40°C ~+85°C.

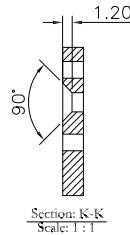
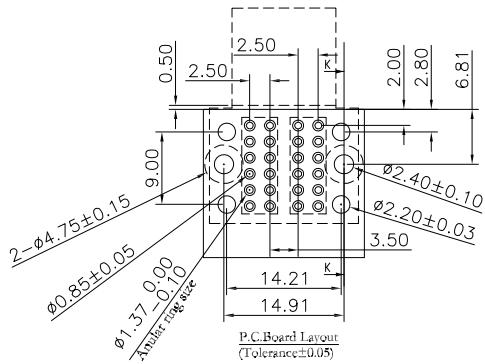
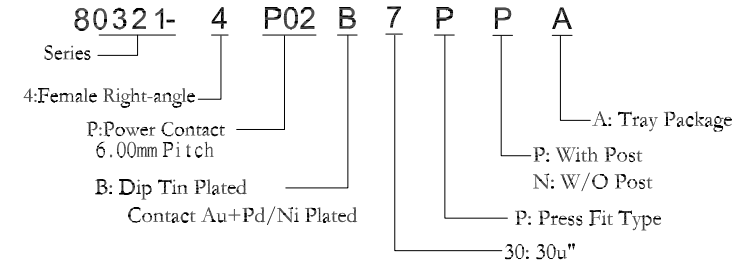
**\*RoHS Compliant**

**Notes:**

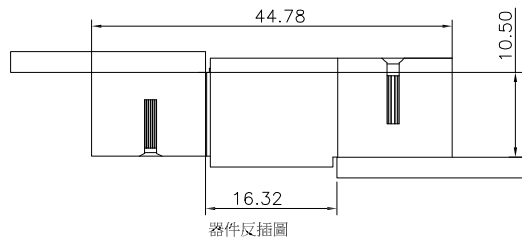
Durability: 200 cycles Max.  
 Screw specification: GB819-85\_M2X10, Shipment quantity: 3PCS.



器件正插圖




Section: K-K  
Scale: 1:1



器件反插圖

**PROPRIETARY NOTE:**

This document contains confidential information and proprietary to Rego Electronics and shall not be reproduced or disclosed to other documents or used for any purpose other than that for which was obtained without the expressed written consent of Rego Electronics.

.X ± 0.30	APPROVED: Chris	 <a href="http://www.rego.com.tw">http://www.rego.com.tw</a>
.XX ± 0.20	CHECKED: Denny	
.XXX ± 0.15	DRAWN: Bryan	
X° ± 3'		
UNITS: mm	SCALE: NONE	TITLE: P50 Power Connector 2P Right Angle Receptacle
		PART NO: 80322-4P02B7PPA
		SHEET: 1 OF 1

A	24.7.2017
REV	DATE

1 2 3 4 5 6 7 8 9 10