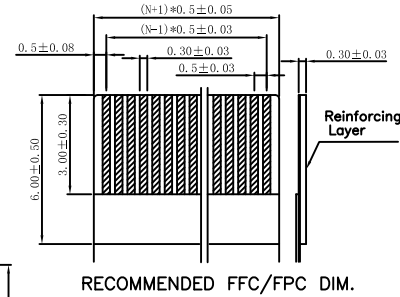
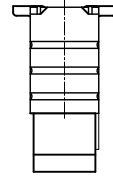
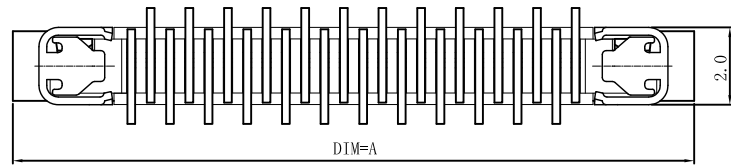


1 2 3 4 5 6 7 8 9 10

A



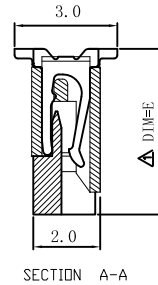
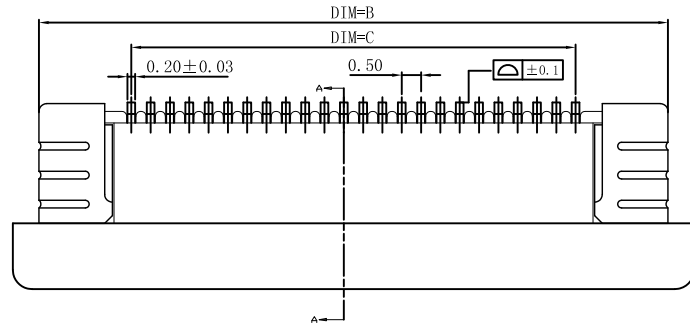
**Electrical Characteristics:**  
 Current rating: 0.4A AC/DC  
 Voltage rating: 50V AC/DC  
 Temperature range: -25°C~+85°C  
 Withstand Voltage: 200V AC/Minute  
 Contact Resistance: ≤ 20mΩ  
 Insulation resistance: ≥ 500mΩ  
 Relative Humidity: 93%+40°C

**Material Description:**  
 Terminal: Phosphor Bronze Tin-Leadplated  
 Fitting Nail: Brass Tin-plated  
 Housing: Thermoplastic(UL94V-0)  
 Slider: Thermoplastic(UL94V-0)

**ORDER INFORMATION**

697-FPC05SBSN-xx x L  
 SBSN Type ———— x ———— L  
 NO. of Contact ———— Package Code  
 T:Tube R:Tape & Reel

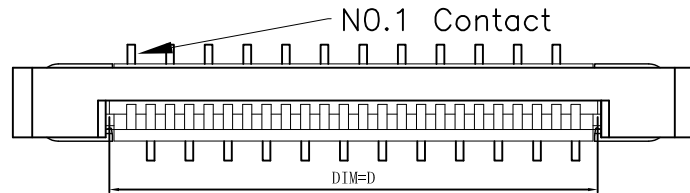
B



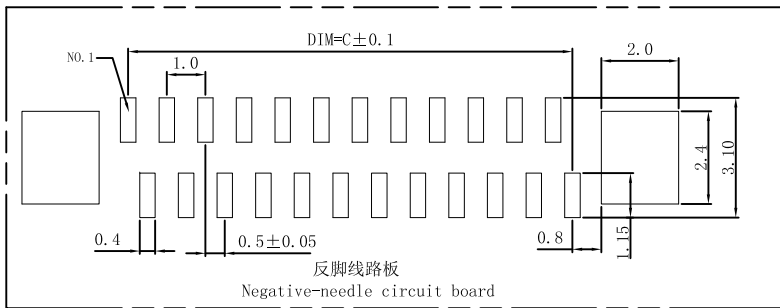
★ Available Number of Contacts

POS.	A	B	C	D	E	POS.	A	B	C	D	E	POS.	A	B	C	D	E
★ 4	7.6	6.5	1.5	2.6	4.4	★ 23	17.1	16.0	11.0	12.1	4.4	★ 42	26.6	25.5	20.5	21.6	
★ 5	8.1	7.0	2.0	3.1		★ 24	17.6	16.5	11.5	12.6		★ 43	27.1	26.0	21.0	22.1	
★ 6	8.6	7.5	2.5	3.6		★ 25	18.1	17.0	12.0	13.1		★ 44	27.6	26.5	21.5	22.6	
★ 7	9.1	8.0	3.0	4.1		★ 26	18.6	17.5	12.5	13.6		★ 45	28.1	27.0	22.0	23.1	
★ 8	9.6	8.5	3.5	4.6		★ 27	19.1	18.0	13.0	14.1		★ 46	28.6	27.5	22.5	23.6	
★ 9	10.1	9.0	4.0	5.1		★ 28	19.6	18.5	13.5	14.6		★ 47	29.1	28.0	23.0	24.1	
★ 10	10.6	9.5	4.5	5.6		★ 29	20.1	19.0	14.0	15.1		★ 48	29.6	28.5	23.5	24.6	
★ 11	11.1	10.0	5.0	6.1		★ 30	20.6	19.5	14.5	15.6		★ 49	30.1	29.0	24.0	25.1	
★ 12	11.6	10.5	5.5	6.6		★ 31	21.1	20.0	15.0	16.1		★ 50	30.6	29.5	24.5	25.6	
★ 13	12.1	11.0	6.0	7.1		★ 32	21.6	20.5	15.5	16.6		★ 51	31.1	30.0	25.0	26.1	
★ 14	12.6	11.5	6.5	7.6		★ 33	22.1	21.0	16.0	17.1		★ 52	31.6	30.5	25.5	26.6	
★ 15	13.1	12.0	7.0	8.1		★ 34	22.6	21.5	16.5	17.6		★ 53	32.1	31.0	26.0	27.1	
★ 16	13.6	12.5	7.5	8.6	★ 35	23.1	22.0	17.0	18.1	★ 54	32.6	31.5	26.5	27.6			
★ 17	14.1	13.0	8.0	9.1	★ 36	23.6	22.5	17.5	18.6	★ 55	33.1	32.0	27.0	28.1			
★ 18	14.6	13.5	8.5	9.6	★ 37	24.1	23.0	18.0	19.1	★ 56	33.6	32.5	27.5	28.6			
★ 19	15.1	14.0	9.0	10.1	★ 38	24.6	23.5	18.5	19.6	★ 57	34.1	33.0	28.0	29.1			
★ 20	15.6	14.5	9.5	10.6	★ 39	25.1	24.0	19.0	20.1	★ 58	34.6	33.5	28.5	29.6			
★ 21	16.1	15.0	10.0	11.1	★ 40	25.6	24.5	19.5	20.6	★ 59	35.1	34.0	29.0	30.1			
★ 22	16.6	15.5	10.5	11.6	★ 41	26.1	25.0	20.0	21.1	★ 60	35.6	34.5	29.5	30.6			

C



D




E

F

A	22.5.2017
REV	DATE

1 2 3 4 5 6 7 8 9 10

**PROPRIETARY NOTE:**  
 This document contains confidential information and proprietary to Rego Electronics and shall not be reproduced or disclosed to other documents or used for any purpose other than that for which was obtained without the expressed written consent of Rego Electronics.

.X ± 0.30	APPROVED: Chris	 <a href="http://www.rego.com.tw">http://www.rego.com.tw</a>
.XX ± 0.20	CHECKED: Denny	
.XXX ± 0.15	DRAWN: Bryan	
X° ± 3°	UNITS: mm	SCALE: NONE

TITLE: 0.5mm FPC FFC Push pull lock cover 2.0t\_Vertical B type connector  
 PART NO: 697-FPC05SBSN-xxxL  
 SHEET: 1 OF 1

A

B

C

D

E

F